



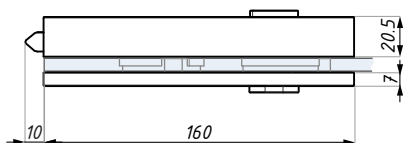
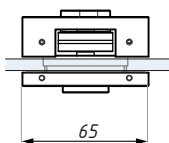
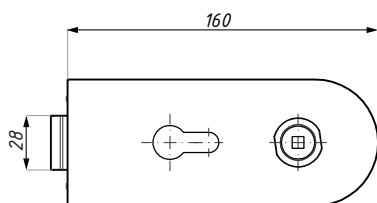
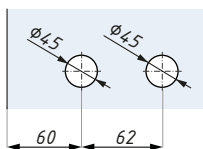
ERICE LINE

KARTA TECHNICZNA / TECHNICAL INFORMATION

TGL35D

Zamek centralny z otworem na wkładkę i kłamekę do drzwi otwieranych dwustronnie
Central lock (double action) prepared for europrofile cylinder and lever handle

Przygotowanie szkła
Glass preparation



Kod / Code	Wykończenie / Finish
TGL35D SSS	satyna / satin stainless steel
materiał: stal nierdzewna	material: stainless steel
grubość szkła (mm): 8; 10; 12	glass thickness (mm): 8; 10; 12
Nie zawiera kłameki, wkładki i płytki zaczepowej	Lever handle, cylinder and keeper plate not included

CDA Polska Sp. z o.o. Sp. k.

Ul. Robotnicza 60, 53-608 Wrocław





 www.cdapolska.pl


 www.oszkle.pl


 www.sklep.cdapolska.pl



 biuro@cdapolska.pl

 Wrocław: 71 797 80 28

 Warszawa: 22 675 05 89

 Gdynia: 58 719 28 78