



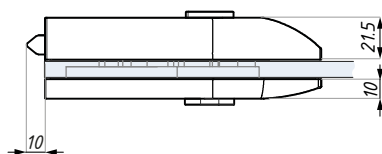
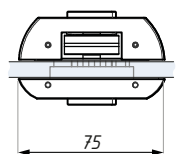
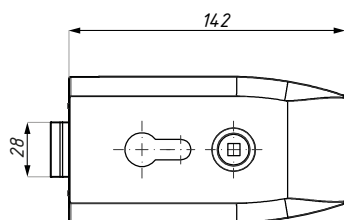
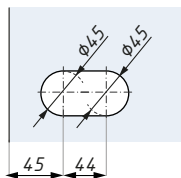
# ERICE LINE

## KARTA TECHNICZNA / TECHNICAL INFORMATION

### TGL40D

Zamek centralny z otworem na wkładkę i klamkę do drzwi otwieranych dwustronnie  
Central lock (double action) prepared for europrofile cylinder and lever handle

Przygotowanie szkła  
Glass preparation



Kod / Code	Wykończenie / Finish
TGL40D SSS	satyna / satin stainless steel
materiał: stal nierdzewna	material: stainless steel
grubość szkła (mm): 8; 10; 12	glass thickness (mm): 8; 10; 12
Nie zawiera klamki, wkładki i płytki zaczepowej	Lever handle, cylinder and keeper plate not included

CDA Polska Sp. z o.o. Sp. k.

Ul. Robotnicza 60, 53-608 Wrocław





 [www.cdapolska.pl](http://www.cdapolska.pl)


 [www.oszkle.pl](http://www.oszkle.pl)


 [www.sklep.cdapolska.pl](http://www.sklep.cdapolska.pl)



 [biuro@cdapolska.pl](mailto:biuro@cdapolska.pl)

 Wrocław: 71 797 80 28

 Warszawa: 22 675 05 89

 Gdynia: 58 719 28 78