



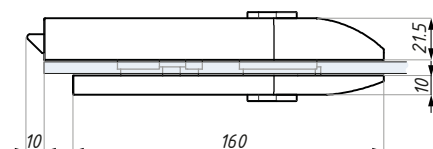
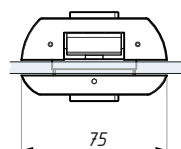
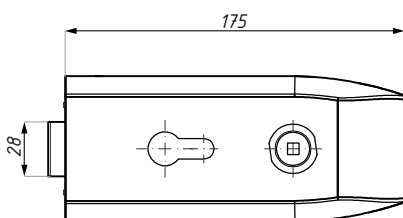
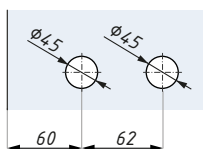
ERICE LINE

KARTA TECHNICZNA / TECHNICAL INFORMATION

TGL45S

Zamek centralny z otworem na wkładkę i kłamekę
Central lock (single action) prepared for europrofile cylinder and lever handle

Przygotowanie szkła
Glass preparation



Kod / Code	Materiał / Material	Wykończenie / Finish
TGL45S SSS	stal nierdzewna / stainless steel	satyna / satin stainless steel
TGL45S NA	aluminium / aluminium	anoda / anodized
grubość szkła (mm): 8; 10; 12		glass thickness (mm): 8; 10; 12
Nie zawiera kłameki, wkładki i płytki zaczepowej		Lever handle, cylinder and keeper plate not included

CDA Polska Sp. z o.o. Sp. k.

Ul. Robotnicza 60, 53-608 Wrocław





 www.cdapolska.pl


 www.oszkle.pl


 www.sklep.cdapolska.pl



 biuro@cdapolska.pl

 Wrocław: 71 797 80 28

 Warszawa: 22 675 05 89

 Gdynia: 58 719 28 78