



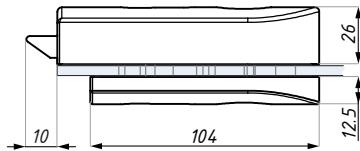
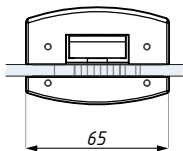
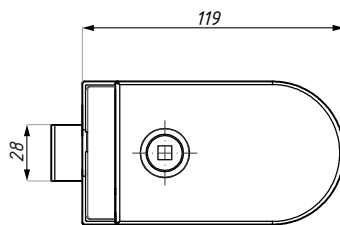
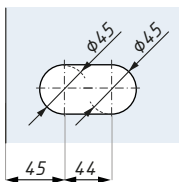
ERICE LINE

KARTA TECHNICZNA / TECHNICAL INFORMATION

TGL60SNH

Zamek centralny z otworem na klamkę
Central lock (single action) prepared for lever handle

Przygotowanie szkła
Glass preparation



Kod / Code	Materiał / Material	Wykończenie / Finish
TGL60SNH SSS	stal nierdzewna / stainless	satyna / satin stainless steel
TGL60SNH NA	aluminium / aluminium	anoda / anodized

grubość szkła (mm): 8; 10; 12 glass thickness (mm): 8; 10; 12

Nie zawiera klamki i płytki zaczepowej Lever handle and keeper plate not included

CDA Polska Sp. z o.o. Sp. k.

Ul. Robotnicza 60, 53-608 Wrocław





 www.cdapolska.pl


 www.oszkle.pl

 www.sklep.cdapolska.pl



 biuro@cdapolska.pl

 Wrocław: 71 797 80 28

 Warszawa: 22 675 05 89

 Gdynia: 58 719 28 78