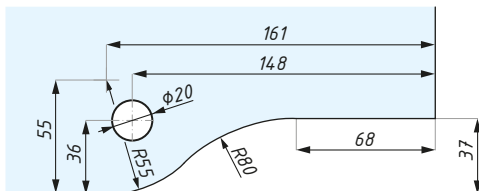
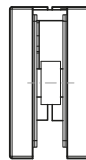
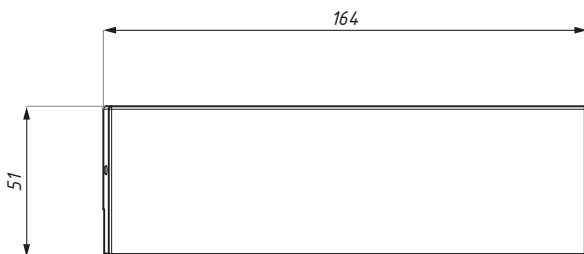
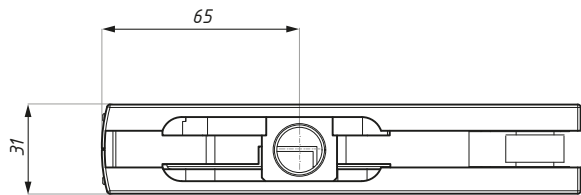


CALABRIA / LINEA NERA

KARTA TECHNICZNA / TECHNICAL INFORMATION

TGPD20

Zawias górny
Top hinge



Przygotowanie szkła / Glass preparation

Kod / Code	Materiał Material	Wykończenie Finish
TGPD20 NABL	aluminium / aluminium	anoda czarna / black anodised
grubość szkła (mm): 10; 12		glass thickness (mm): 10; 12
zalecana siła dokręcania śrub (Nm): M6: 15		recommended torque force for the screws (Nm): M6: 15
pasuje do: TGPD24; TGPD30; TGPD40		hinge insert matches: TGPD24; TGPD30; TGPD40

CDA Polska Sp. z o.o. Sp. k.

Ul. Robotnicza 60, 53-608 Wrocław




 www.cdapolska.pl


 www.oszkle.pl

 www.sklep.cdapolska.pl



 biuro@cdapolska.pl

 Wrocław: 71 797 80 28

 Warszawa: 22 675 05 89

 Gdynia: 58 719 28 78